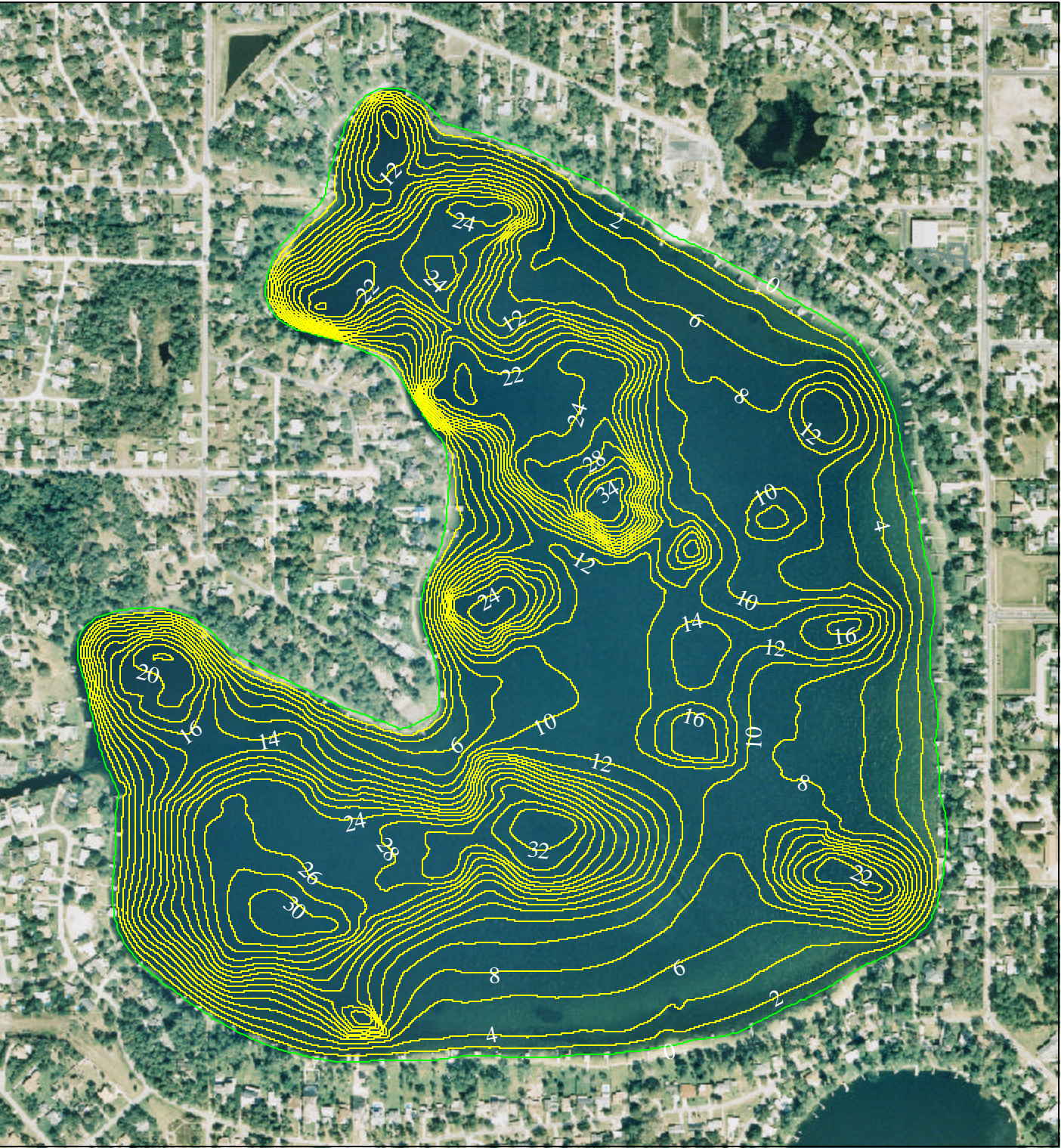
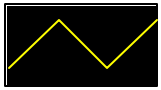



Bear Lake

Section - Township - Range
18&19-21-29



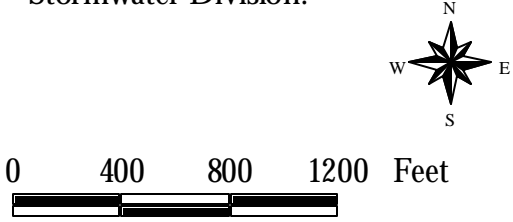
 Contour Lines
Expressed in
2-Foot Intervals

 Estimated Lake
Perimeter

EXPLANATION:
Assessment Date: July 13, 2000.
Lake water level was 101.769 ft.
above sea level when the lake was
assessed. Contours are expressed in
absolute depth below this level.

DATA SOURCES:
Seminole County 1999 color aerials
provided by Seminole County Public
Works. All contours generated by
Florida Center for Community Design
and Research based on GPS/Sonar
data provided by the Seminole County
Stormwater Division.

0 400 800 1200 Feet



A north arrow pointing upwards with 'N', 'S', 'E', and 'W' labels. Below it is a scale bar with markings at 0, 400, 800, and 1200 feet.